

DIAGRAMA UNIFILAR - TABLERO GENERAL (TG)

380V-3+N-3Ø - 230V-1Ø, 60Hz - 18 polos

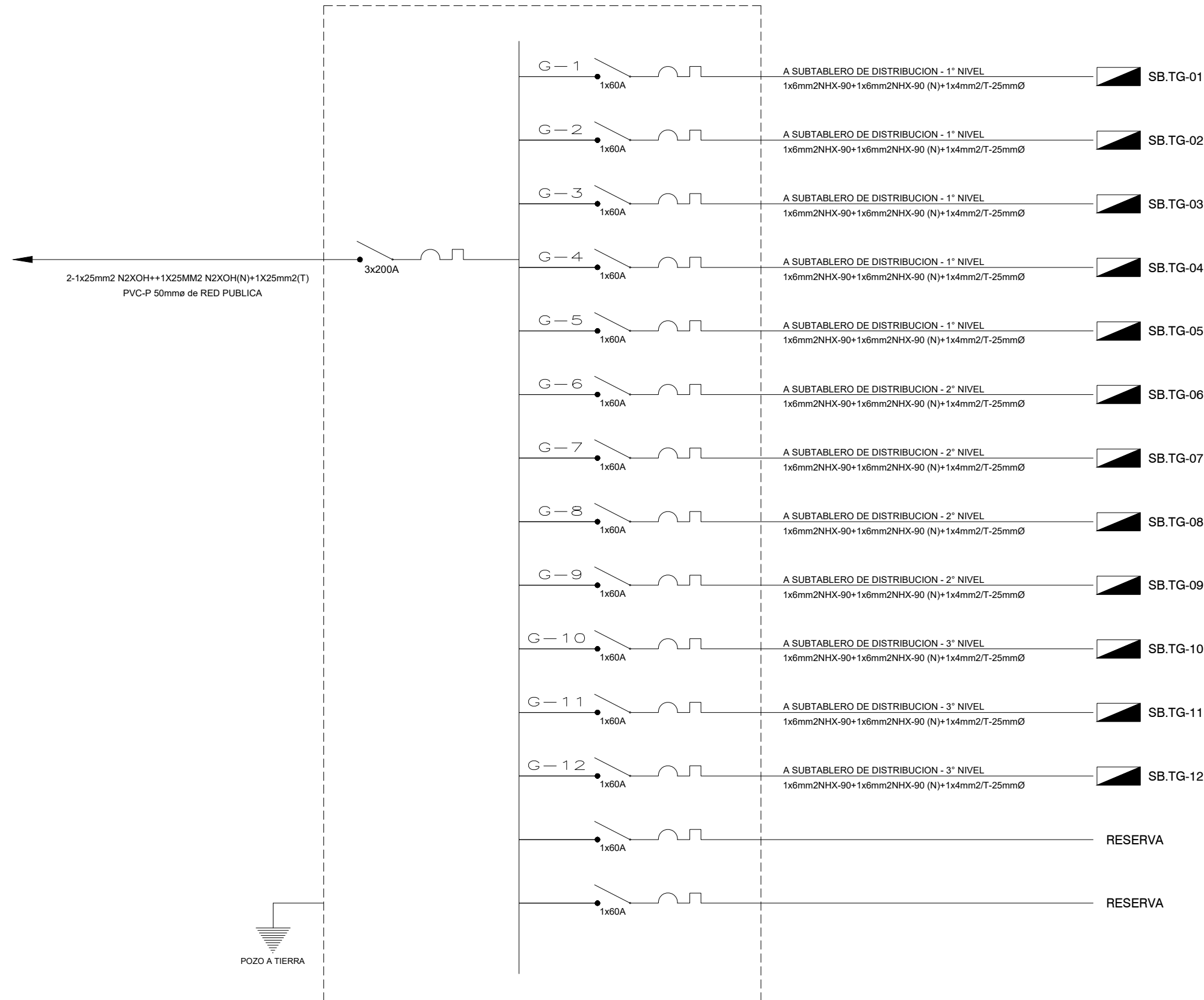


DIAGRAMA UNIFILAR - SUB-TABLERO DE DISTRIBUCION (SB-TG-01)

220V-2Ø, 60Hz - 18 polos

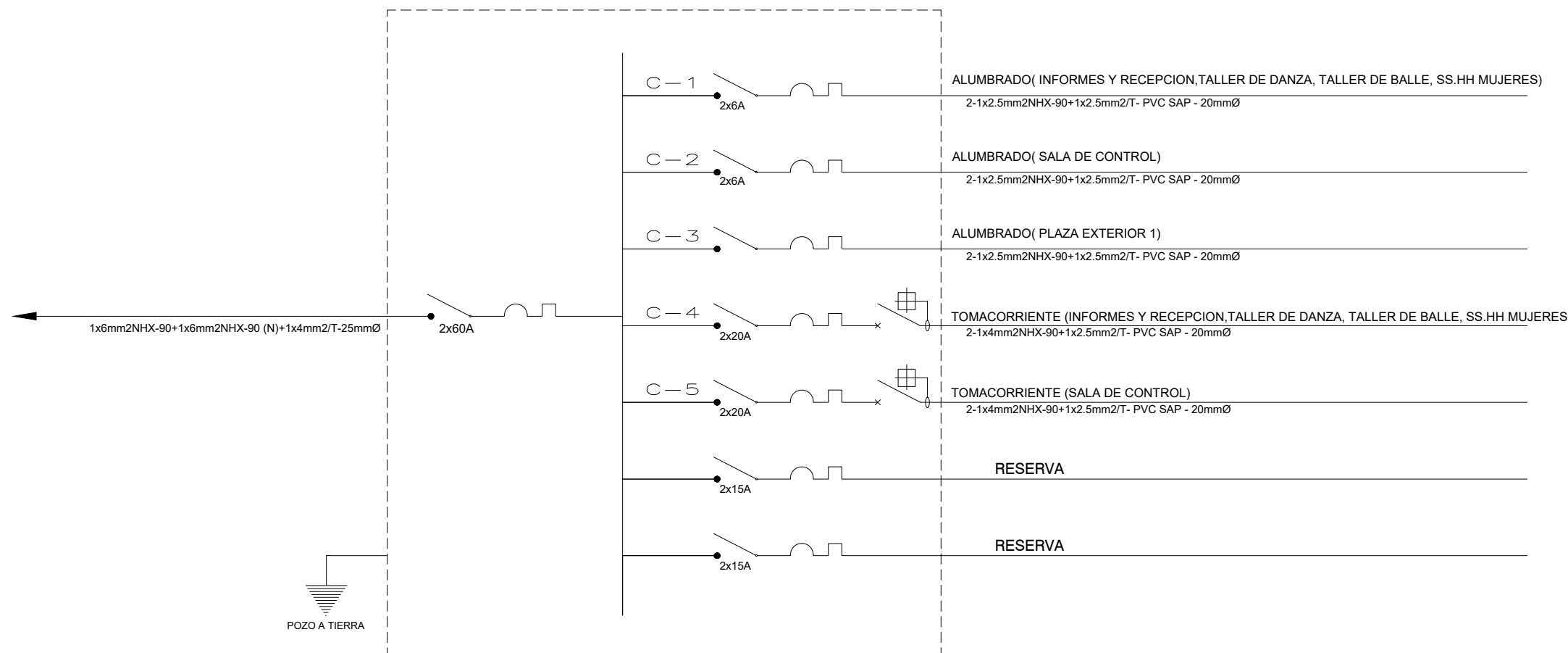


DIAGRAMA UNIFILAR - SUB-TABLERO DE DISTRIBUCION (SB-TG-02)

220V-2Ø, 60Hz - 12 polos

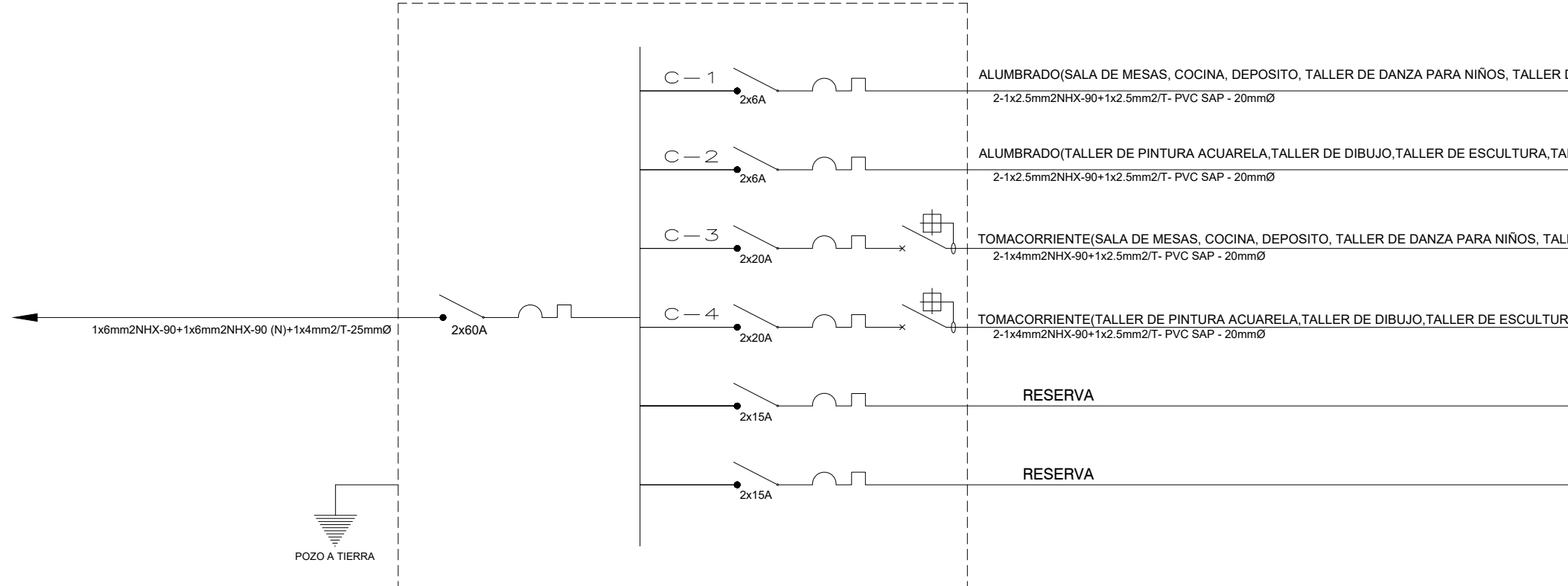


DIAGRAMA UNIFILAR - SUB-TABLERO DE DISTRIBUCION (SB-TG-03)

220V-2Ø, 60Hz - 8 polos

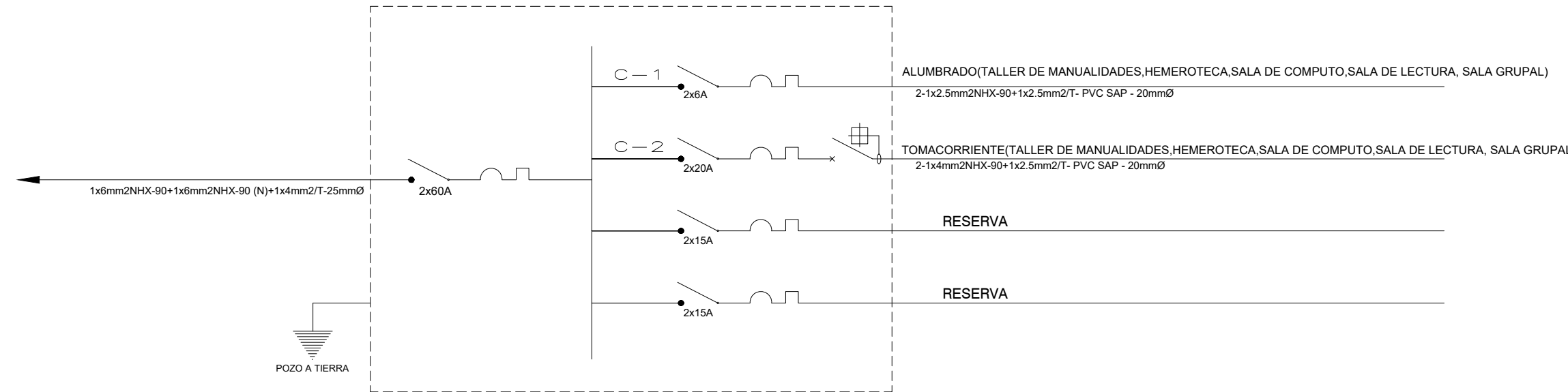


DIAGRAMA UNIFILAR - SUB-TABLERO DE DISTRIBUCION (SB-TG-04)

220V-2Ø, 60Hz - 12 polos

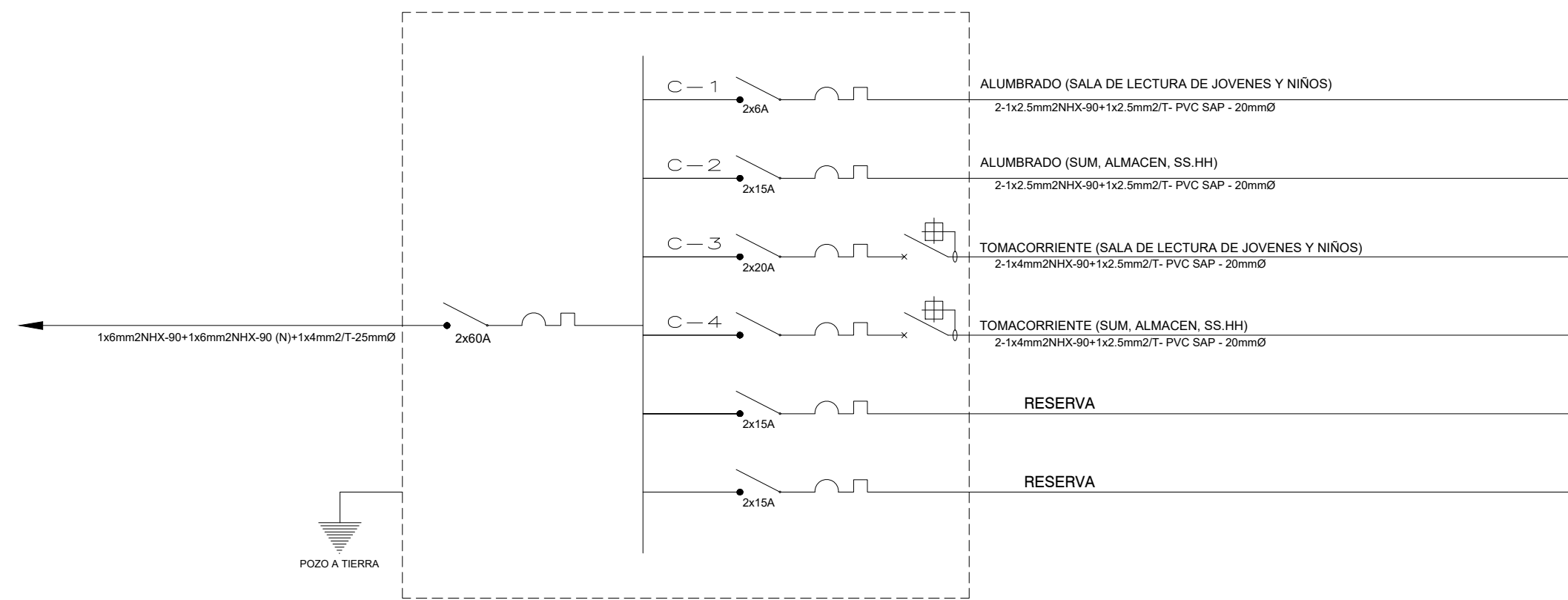


DIAGRAMA UNIFILAR - SUB-TABLERO DE DISTRIBUCION (SB-TG-05)

220V-2Ø, 60Hz - 8 polos

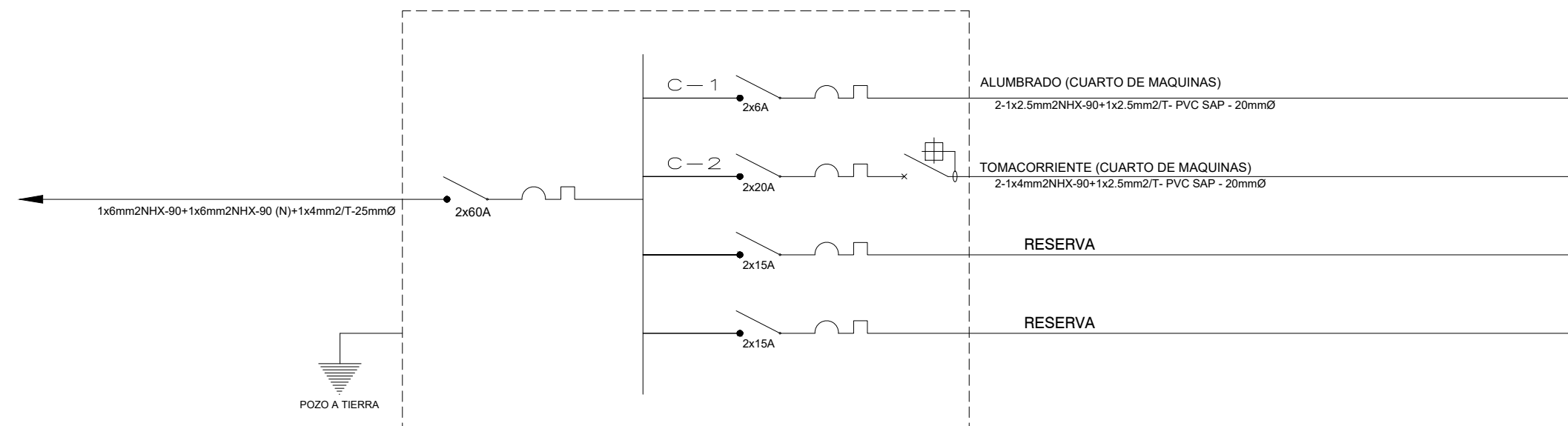


DIAGRAMA UNIFILAR - SUB-TABLERO DE DISTRIBUCION (SB-TG-06)

220V-2Ø, 60Hz - 8 polos

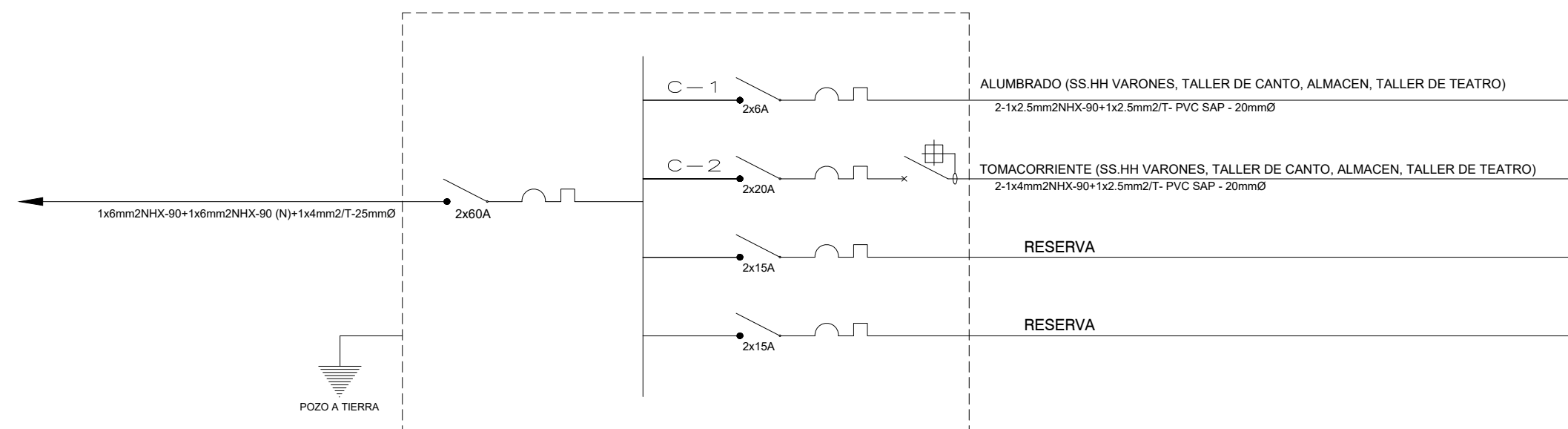


DIAGRAMA UNIFILAR - SUB-TABLERO DE DISTRIBUCION (SB-TG-07)

220V-2Ø, 60Hz - 8 polos

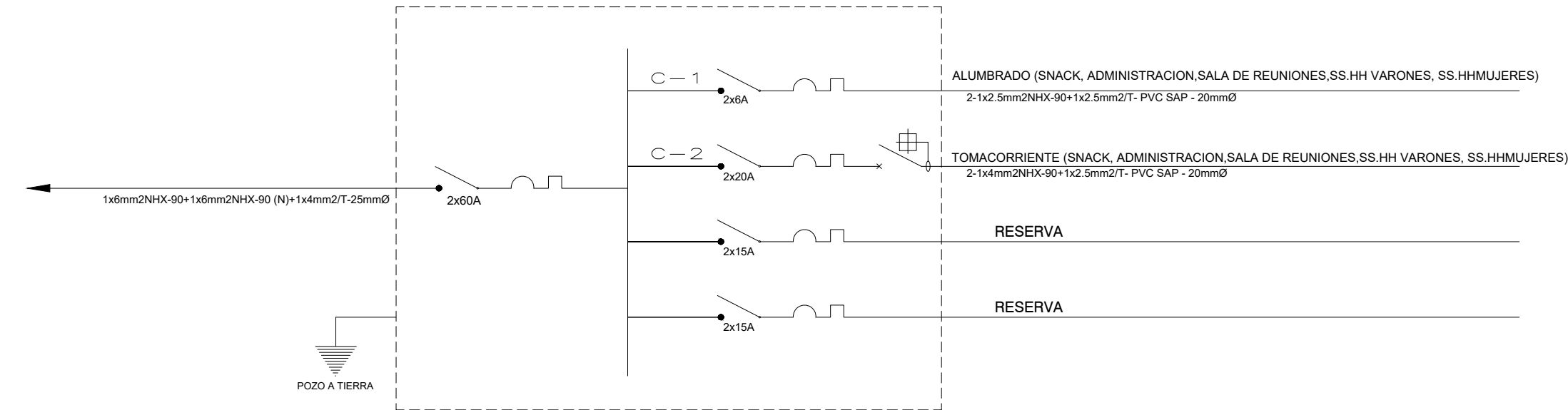


DIAGRAMA UNIFILAR - SUB-TABLERO DE DISTRIBUCION (SB-TG-08)

220V-2Ø, 60Hz - 8 polos

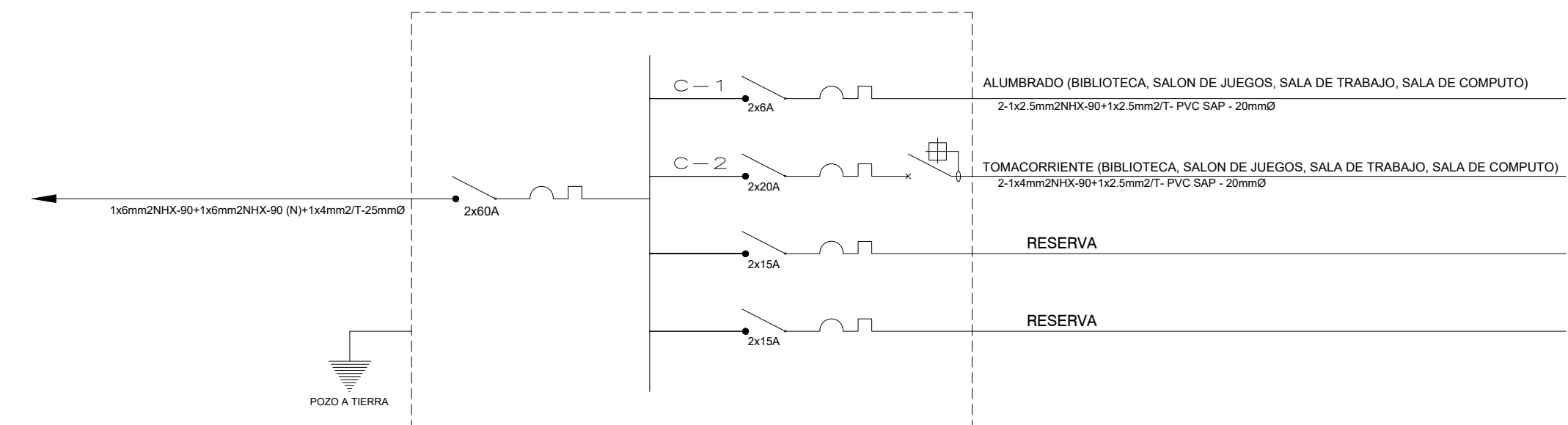


DIAGRAMA UNIFILAR - SUB-TABLERO DE DISTRIBUCION (SB-TG-09)

220V-2Ø, 60Hz - 8 polos

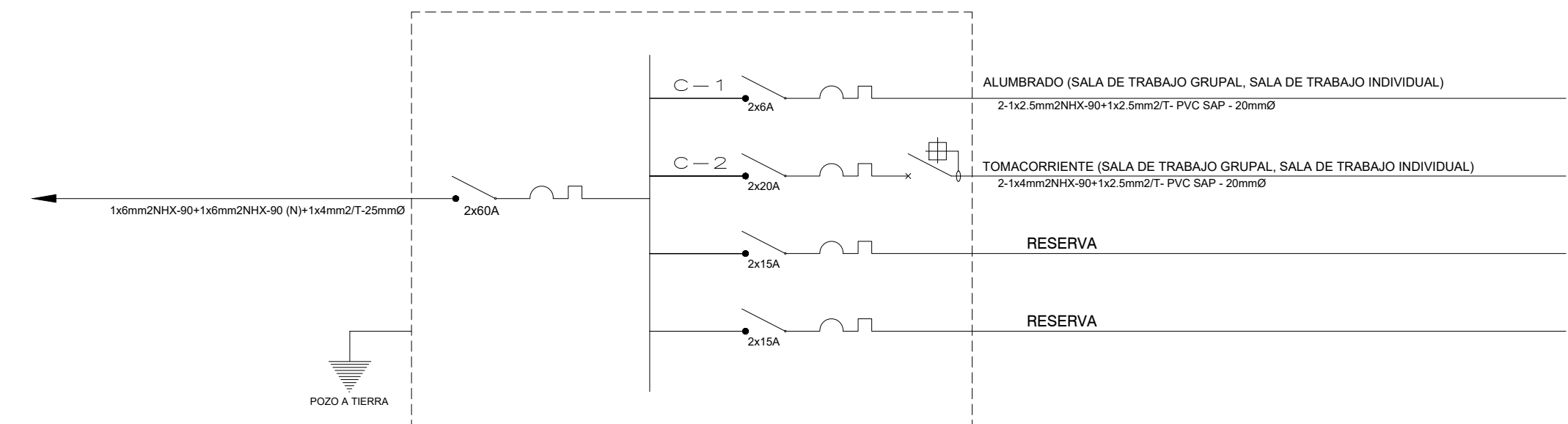


DIAGRAMA UNIFILAR - SUB-TABLERO DE DISTRIBUCION (SB-TG-10)

220V-2Ø, 60Hz - 12 polos

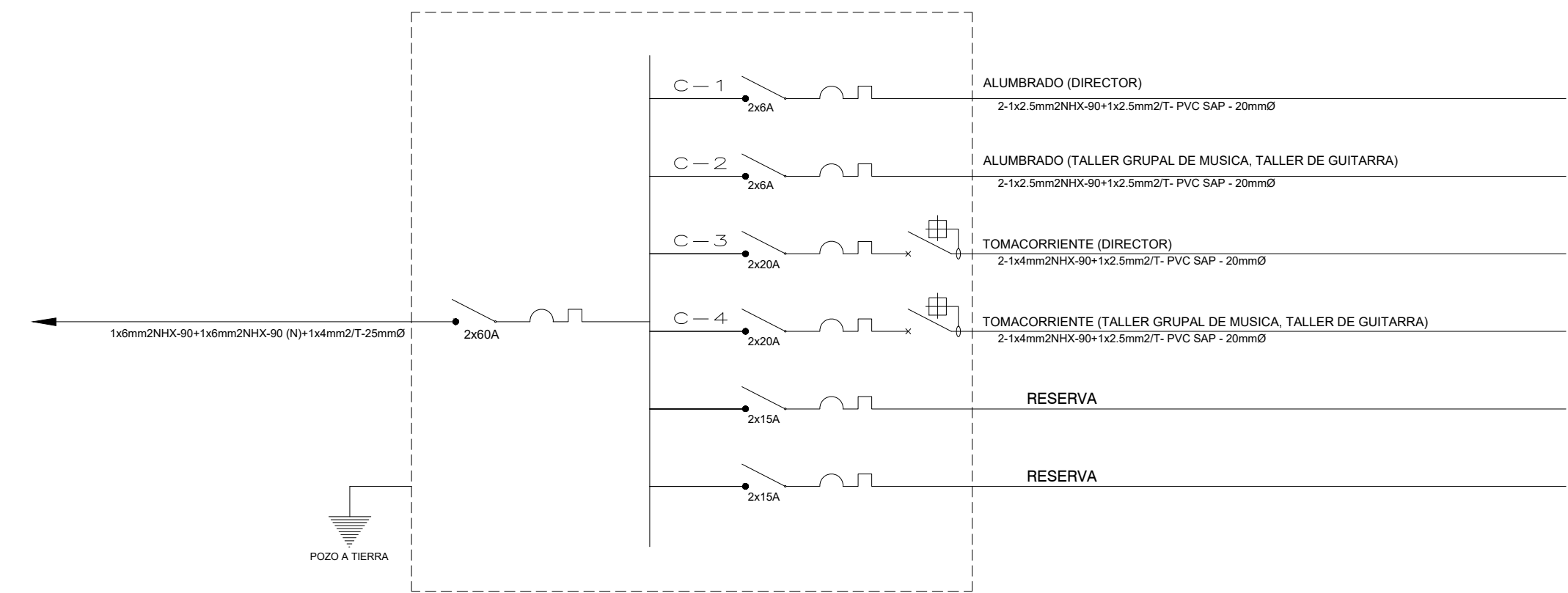


DIAGRAMA UNIFILAR - SUB-TABLERO DE DISTRIBUCION (SB-TG-11)

220V-2Ø, 60Hz - 8 polos

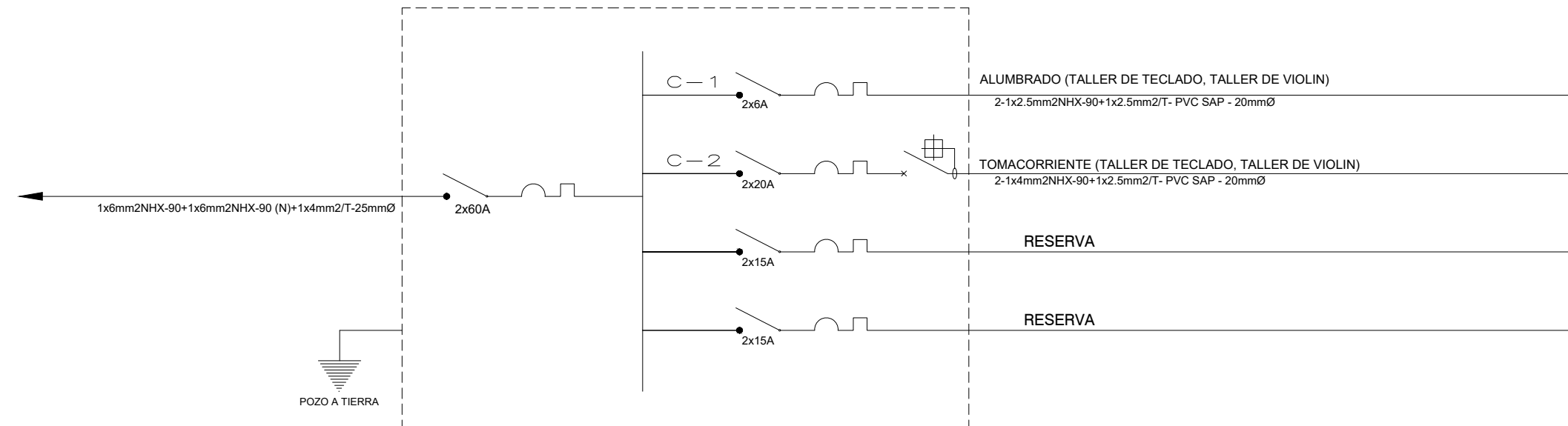


DIAGRAMA UNIFILAR - SUB-TABLERO DE DISTRIBUCION (SB-TG-12)

220V-2Ø, 60Hz - 8 polos

